

Product Datasheet

For research use only



Anti-WNT6 Rabbit Polyclonal Antibody #52644

Aliases

WNT6; Wnt Family Member 6; Wingless-Type MMTV Integration Site Family, Member 6; Protein Wnt-6

Background

UniProt Entry: Q9Y6F9; NCBI Gene Entry: 7475

Application Information

Molecular Weight: Predicted, 40 kDa; observed, 42 kDa

Clonality: Rabbit polyclonal antibody

Species Reactivity: Human, mouse

Applications Tested: Western blotting (WB), immunohistochemistry (IHC), immunocytochemistry (IC)

Immunogen

A synthesized peptide derived from human WNT6

Isotype

Rabbit IgG

Storage Buffer

Supplied in TBS (pH 7.4) containing 50% glycerol, 1% BSA and 0.02% Proclin 300.

Storage

Store at -20 °C for one year.

Recommended Dilutions

Western Blotting (WB): 1:500-1:2,000

Immunohistochemistry(IHC): 1:100-1:500

Immunocytochemistry (IC): 1:100-1:500

Support

support@genuinbiotech.com
TEL: +1-540-855-7041

Orders

sales@genuinbiotech.com
FAX: +1-540-855-7041

WWW.GENUINBIOTECH.COM

Product Datasheet

For research use only



Protocols

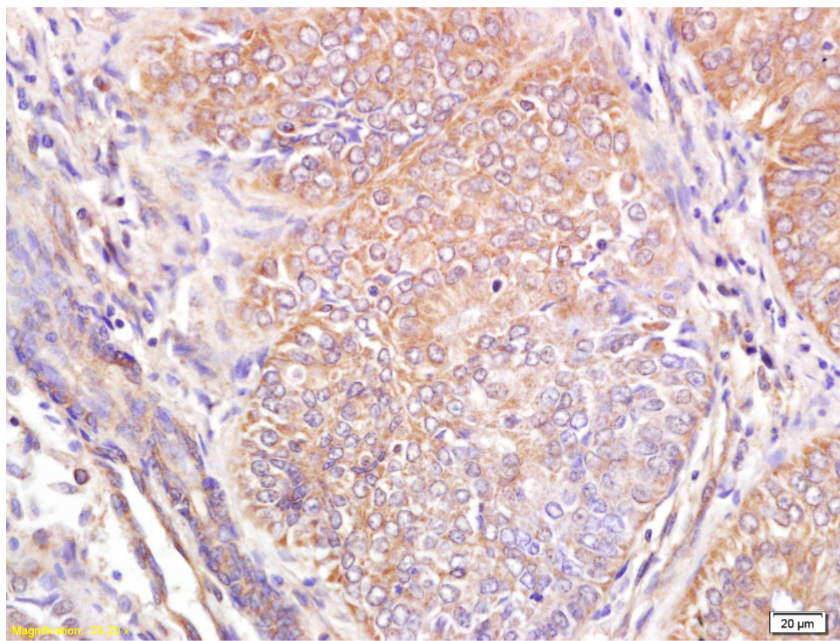
For general and specific antibody protocols please visit our website. Read all instructions before using this product.

Product Datasheet

For research use only



Antibody Validation



Paraformaldehyde-fixed, paraffin embedded human breast carcinoma; Antigen retrieval by citrate buffer (pH 6.0), boiling bathing for 15min; Block endogenous peroxidase by 3% Hydrogen peroxide for 30min; Blocking buffer (normal goat serum) at 37°C for 20 min; Antibody incubation with anti-WNT6 antibody (Cat#52644, 1:200), overnight at 4°C, followed by conjugation to the secondary antibody and DAB staining.

Support

support@genuinbiotech.com
TEL: +1-540-855-7041

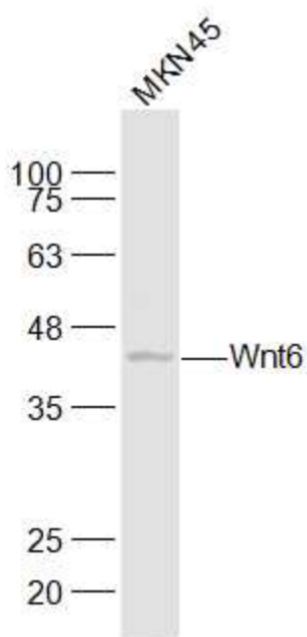
Orders

sales@genuinbiotech.com
FAX: +1-540-855-7041

WWW.GENUINBIOTECH.COM

Product Datasheet

For research use only

**Antibody Validation**

Western blotting analysis using anti-WNT6 antibody (Cat#52644). Total cell lysates (30 µg) from various cell lines were loaded and separated by SDS-PAGE. The blot was incubated with anti-WNT6 antibody (Cat#52644, 1:1,000) and IRDye800CW-conjugated goat anti-rabbit secondary antibody (1:20,000) respectively.

Support

support@genuinbiotech.com
TEL: +1-540-855-7041

Orders

sales@genuinbiotech.com
FAX: +1-540-855-7041

WWW.GENUINBIOTECH.COM